



Filming in Thailand

The New Normal: Rules & Regulations





Filming in Thailand

The New Normal: Rules & Regulations

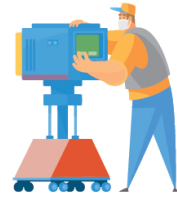


Thai Version



English Version

INTRODUCTION



Thailand is extremely proud of the achievements of the international production services industry over the last decade. Incredible locations, skilled crews and a wealth of creative talent, combined with attractive incentive measures have established Thailand as a popular destination for international productions.

International productions not only spend money in Thailand, but also help to nurture local skills. Additionally, the scenes of Thailand shown on screens around the world have provided enormous benefits to the tourism industry.

A vital factor in the choice of Thailand as a location is that it has always offered a safe, welcoming and comfortable environment for visitors. With some of the finest accommodation in the world and excellent healthcare facilities, cast and crew visit Thailand with absolute confidence that they will be in safe hands.

As the world struggles to deal with the COVID-19 epidemic, the film and television industries are among the many industries that have been severely disrupted. Thailand dealt with the COVID-19 epidemic swiftly and decisively, and the measures implemented have been extremely successful.

The Department of Tourism, Ministry of Tourism and Sports has been working to create a framework of rules and guidelines that will enable Thailand to re-open to international productions. While the new system must allow filming to take place practically and efficiently, the health of the visiting production team and of the local population must be protected.

The measures outlined in this guide have been developed in accordance with the government's health policies, and after consultation with the production services industry.

We are confident that these measures will allow international production to return to Thailand and most importantly that we can offer you a shooting environment which protects your cast and crew from COVID-19 and protects Thailand.

Department of Tourism

CONTENTS

Filming in Thailand The New Normal: Rules & Regulations

	Page
1 Travel to Thailand & COVID-19 Testing	1
1.1 Before flying into Thailand	
1.2 Flying into Thailand	
1.3 Arrival in Thailand	
1.4 Insurance	
1.5 Quarantine and COVID-19 Testing	
2 Location Management	4
3 Individual Responsibilities	6
4 Health Screening	7
5 Disease Prevention	8
6 Cleaning	10
7 Thai Supporting Artists and Extras	11
8 Casting	12
9 Measures for Individual Departments (Camera, Lighting, Sound and Director's Team)	13
10 Make-up, Hair, and Wardrobe Departments	14
11 Art Department	15
12 Catering and Craft Services	17
13 Transportation	19
14 Monitoring Compliance	20
COVID-19 Useful Links + Helplines	
Appendix	

1

Travel to Thailand & COVID-19 Testing



1.1 Before flying into Thailand

- You should avoid visiting crowded areas or placing yourself at risk of exposure for at least 14 days before travelling.
- In addition to the Visa exemption which you can apply for in your country at the Royal Thai Embassy, The Royal Thai Consulate General or Thailand Trade and Economic office in your country, you will need to prepare the following documents:
 - A Certificate of Entry (COE) from a Royal Thai Embassy, a Royal Thai Consulate General or a Thailand Trade and Economic Office confirming your eligibility for entry into Thailand.
 - A 'Fit to Fly' or 'Fit To Travel' health certificate, from a doctor or hospital, confirming that you have no medical conditions that would impact your ability to travel.
 - A certified laboratory result that shows COVID-19 has not been detected using RT-PCR (nasopharyngeal swab) testing. This must be issued within 72 hours of travel.
 - Proof of health/travel insurance which includes coverage for COVID-19 related health issues for at least US\$100,000, and which must be valid for the duration of the stay in Thailand. If COVID-19 insurance is not available, other forms of collateral may be acceptable.
 - Proof of booking for your quarantine accommodation, as officially approved as 'Alternative State Quarantine'. There is a range of approved hotels available at different price ranges.
 - Travel itinerary and accommodation reservation. (to show where you will be staying and where you will be travelling in Thailand after the quarantine period)

1.2 Flying into Thailand

shall be regulated via the policy announced by The Civil Aviation Authority of Thailand
Website: www.caat.or.th/en/

1.3 Arrival in Thailand

- Screening for respiratory symptoms and fever will be carried out in your country before departure. (Exit Screening)
- Screening for respiratory symptoms and fever will be carried out upon arrival in Thailand. (Entry Screening)
- All documents outlined in 1.1 must be kept by the visitor and submitted to the disease control officers upon arrival at the airport or other point of entry to Thailand.
- The visitor must install the official Thailand contact tracing application on their smart-phone and keep installed throughout their stay in Thailand.

1.4 Insurance

International Cast and Crew

International cast and crew must purchase personal insurance which includes coverage for COVID-19 related health issues of at least US\$100,000 before traveling from their original country. If COVID-19 insurance is not available, other forms of collateral may be acceptable.

Thai Cast and Crew

COVID - 19 insurance will be required for all Thai cast and crew. The international production will be responsible for the costs of insurance which includes coverage for COVID-19 related health issues of at least 500,000 Thai Baht (Approx. US\$16,000). If Thai cast and crew are infected with COVID-19 as a result of their participation in the production, the international production is responsible for any excess costs not covered by the insurance policy.

1.5 Quarantine and COVID-19 Testing

International Cast and Crew

- International cast and crew will be required to stay in quarantine for 14 days (15 nights) in the Alternative State Quarantine Accommodation which was booked before arrival. The first day of quarantine is counted as the first full day following arrival.
- A COVID-19 test using the RT-PCR (nasopharyngeal swab) method will be administered twice during the quarantine period - once in the first five days, and again in the last four days.
- After cast and crew members have completed quarantine, and passed the second COVID-19 test, they may travel as needed for work. If there is a change in the itinerary, they must inform the Department of Tourism at least 24 hours before travel. You may not use public transport.

Thai Cast and Crew

- Thai cast and crew will very likely be working closely with international cast and crew. In some situations, particularly where Thai and international actors must perform scenes together, normal preventive measures may not always be possible. In a situation where Thai cast or crew find themselves in close proximity to a member of the international cast and crew that has been in Thailand for less than 30 days (including the 14 days quarantine period), the Thai cast or crew member will be required to take a COVID-19 test using the RT-PCR method (nasopharyngeal swab) from a government-approved medical facility within their first week of production.

Remarks

1. All cast and crew must agree to undertake further COVID-19 tests by RT-PCR (nasopharyngeal swab) as required by disease control officers at any time. (as local regulations and situations require)
2. The international production is responsible for the cost of accommodation for quarantine and COVID-19 testing of all cast and crew including Thai cast and crew.

2

Location Management



- All filming locations must operate in accordance with the current measures for facilities offering services to the public. These measures include registration as a public venue, participation in the 'Thai Chana' mobile phone application, and the provision of staff at the entrance to provide explanation, advice and assistance to visitors in registering their arrival and departure.
- Where visitors do not have access to a smartphone running the 'Thai Chana' mobile phone application, the venue must provide a manual registration form allowing visitors to log their attendance.
- There must be an area dedicated to screening for symptoms of fever, cough, shortness of breath and flu-type symptoms for all cast and crew before entering the location.
- All locations must have adequate facilities for sanitation of hands - including access to 70% alcohol gel or disinfectant in the working areas, and hand-washing facilities with soap provided.
- In areas where groups of cast or crew are seated together, adequate markings should indicate the necessary distancing between the seats of at least 1 metre apart. These shall include dining areas, communal dressing rooms, and the area around the viewing monitor.

- Filming locations should be large enough to enable adequate social distancing. Separate areas within a location should be at least 2 metres apart, e.g. where separate sets are constructed within in a single studio, warehouse or location.
- All indoor locations must provide adequate ventilation and avoid closed areas without air-flow. Where air conditioning is installed, airways should not be obstructed. Fans should be used to increase air-flow where necessary, particularly in and around toilet facilities.
- All dining areas should be well-ventilated and provide adequate space and air-flow. Diners should be seated at least 1 metre apart. If necessary, meal-times should be staggered so that the safe capacity of the dining area is maintained.
- Every location must make protective equipment available to all those who enter. This shall include surgical or other protective masks.
- It is vital that the use of proper communications and public relations supports a united effort, knowledge and understanding of the preventive measures, including the duty and responsibility of all crew in common areas of the workplace.
- The production must not only provide equipment, guidance and preventive measures at the location, but is also responsible for ensuring that all team members follow the measures. A system must be put in place to monitor and ensure compliance. Where necessary, this should include the use of CCTV cameras to monitor the protection measures.
- Locations may not be added or changed without informing the Department of Tourism within 24 hours, and the production must have a written agreement or permit from the owner.
- Creative decisions should be made with as much detail as possible during the pre-production period, to allow appropriate safety measures to be implemented, and to avoid last-minute changes on the shoot day.
- Where possible, video village should be set up at a standby area and not on set.

3

Individual Responsibilities



Every person on set has an individual responsibility and a duty to prevent the transmission of COVID-19.



Wash your hands frequently or sanitize your hands with 70% alcohol gel before and after working.



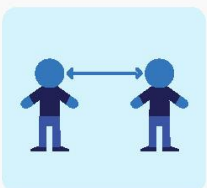
Any team member that is immune-compromised or in a high-risk category must disclose this to the production coordinator, be protected, and work from home.



Personal items which are brought onto set, including mobile phones and tablets should be cleaned after leaving the set. At the end of the day's work, team members should shower and change clothes.



All team members must report to the local coordinator or unit production manager immediately if they have been in contact with anyone suspected of having COVID-19 or exhibiting COVID-19 symptoms.



Keep your distance and limit physical contact - avoid handshakes, refuse kisses on the cheek, and avoid hugging.

4

Health Screening



- At least one Medic / appointed Health and Safety Officer must be present on every shoot, and a designated consultation area is to be provided for health checks.
- All team members, including cast and crew, Thai and foreign, must undertake a health screening before entering the location. This screening must check for respiratory symptoms and test for a fever, ensuring that no-one is allowed on site with a temperature of higher than 37.5 degrees Celsius. Once a team member has passed this screening, he must wear a sticker/label or other indication confirming his 'Pass' status. It is also important that correct procedures are taken in the case of a team member who does not pass the health screening. The production must have proper protocols in place to isolate, report and follow the guidelines for suspected health conditions.
- In order to identify those members of the team whose age or health history puts them at a higher risk, the production should use the government mobile phone application or prepare a risk questionnaire to record appropriate health information.
- Anyone failing a health screening or exhibiting COVID-19 symptoms such as dry cough, fever, muscle pain, and sore throat will not be permitted on set.
- Anyone developing symptoms whilst at work will be sent home and will be allowed back to work only after a satisfactory health check and advisory.
- If any cast and crew are found to be infected with COVID-19, the production must halt immediately. All cast and crew must undergo immediate COVID-19 testing and will be required to stay in quarantine for 14 days.

5

Disease Prevention



- Crew and production team should maintain a minimum 1 metre distance, and refrain from activities which require close contact.
- In order to avoid large groups of people working at the same time on any one set, scheduling should stagger the work of the different teams requiring access to prepare the location. When the task of that team is completed, they should leave the set, and thereby reduce the number of persons on set to a minimum.
- Everyone on set should wash their hands with soap and clean water, or use 70% alcohol gel before, during and after every operation.
- The production team and crew must wear surgical or other protective masks at all times when on location. Cast members must also wear protective masks at all times other than when it is necessary to remove the masks to record a scene.
- Avoid huddles and close conversations. Avoid shouting or talking loudly. Do not remove masks. Avoid coughing and sneezing when near others. When coughing or sneezing, cover your mouth and nose.
- Food and drink should be prepared and served individually. Dishes should not be shared among multiple diners and serving should not use shared utensils.

- Electronic communications such as mobile phones and walkie-talkies should be used wherever possible to reduce the need for face-to-face communication.
- Items which come into contact with an individual's face should never be shared. Examples include eating and drinking containers, utensils, cosmetics, handkerchiefs and towels.
- Cast and crew must be transported using sufficient numbers of vehicles to avoid crowding. In vans, no more than two passengers should be seated per row. Logs should be kept of the passengers and drivers allocated to each vehicle.
- All members of the team, including cast and crew, must be properly briefed on the preventive measures, both in general and specific to each location. They should understand that their cooperation is vital to reduce the risk of spreading infection.
- The production must put a system in place which allocates the necessary responsibility, authority and resources to monitor, inspect, supervise and enforce the safety measures.
- A film set can require the participation of many individuals, including performers, crew, production teams, outside suppliers, and local support. It is vital that the use of proper communications and public relations supports a united effort, knowledge and understanding of the preventive measures, in order to ensure a coordinated and safe environment.
- If any person who has visited a location is found to have been exposed to infection, or if there is any suspicion that the location may be a point of infection, the production team must leave the location, and the location must be isolated as required by the disease control officer. Investigatory and cleaning measures should proceed as ordered by representatives of the Department of Disease Control.

6

Cleaning



- Cleaning workers must wear personal protective equipment including a hair hood, face shield or cloth mask, and gloves.
- Any surfaces, handles, knobs, buttons or handrails which are common points of human contact, including elevators, stair-rails, door handles etc., must be cleansed with appropriate disinfectants, including solutions with 70% alcohol, sodium hypochlorite, or a chlorine-based disinfectant. Disinfection measures should be carried out before and after filming.
- All equipment used for the filming must be cleaned regularly. This includes cameras, camera rigs, camera attachments, monitors etc. Particular attention should be paid to those items of equipment which come into frequent contact with skin or saliva, e.g. walkie-talkies, megaphones, microphones, boom-poles, wind-shields. These items should be disinfected with a 70% alcohol solution after each scene. Such equipment should be assigned for the use of a single person, and not be shared.
- Personal clothing and jewelry must sometimes be stored for cast members while they are on set. Plastic clothing bags and sealable plastic bags or containers should be used, and if re-used, must be disinfected with 70% alcohol solution between each use. Each item of clothing and jewelry should be stored separately.
- All vans, shuttle buses and other shared transport must be cleaned frequently with 70% alcohol solution, paying particular attention to areas that come into frequent contact with passengers, including air conditioning controls, seats, seat covers, armrests, interior windows, curtains, and cup-holders.
- Toilets should be kept clean and disinfected at least twice a day with detergents such as sodium hypochlorite. Particular attention should be paid to those surfaces and areas which come into contact with skin, including toilet seats, handles, doorknobs, door latches, faucets, etc.
- Adequate receptacles should be provided for the disposal of garbage. Separate containers should be provided and appropriately labelled for the disposal of masks. When containers are full, the garbage should not be mixed, but sealed separately and securely in garbage bags before disposal according to approved sanitation principles every day.

7

Thai Supporting Artists and Extras



Supporting artists, day-players, extras, and all other local performers employed on the production will very likely be working closely with international cast and crew. In some situations, particularly where they must perform scenes together, normal preventive measures may not always be possible. In a situation where they find themselves in close proximity to a member of the international cast and crew that has been in Thailand for less than 30 days (including the 14 days quarantine period), supporting artists, day-players, extras, and all other local performers employed on the production will be required to take a COVID-19 test using the RT-PCR method (nasopharyngeal swab) from a government-approved medical facility within their first week of production.



Artists must be provided with a designated standby area and social distancing protocols must be adhered to.



All cast and crew must wear a mask at all times except during filming.

8

Casting

- Where possible, self-taping or use of video conferencing should be used for remote casting. Video conferencing applications allow the ability for the casting team to record the remote casting session.
- Where casting takes place at a casting studio, all social distancing and hand sanitizing protocols must be adhered to.
- Anyone who belongs to a high-risk health group should not put themselves forward for casting. (including pre-existing medical conditions such as high blood pressure, diabetes, etc.)
- Cast must fill in a health questionnaire.
- To avoid unnecessary casting sessions, open casting calls should be avoided. Only talent that conforms to the casting specs, director's vision and budget should be invited to a casting session.
- Casting studios should be arranged to allow adherence to social distancing protocols, with seating 2 metres apart both in the studio and in waiting areas.
- Overflow systems must be set up outside the casting studio to delineate the correct distancing.
- Casting directors and staff at casting studios must always wear a surgical mask or protective mask when engaging with talent and each other. Talent will always be required to wear masks during the casting session, other than during the actual audition.
- Hand sanitizers will be provided at the entrance to the casting premises. Talent will be advised to use on arrival and departure.
- Use of paper forms and sharing of pens should be limited and managed. Where possible, electronic versions should be used.

9

Measures for Individual Departments (Camera, Lighting, Sound and Director's Team)



- The number of crew should be kept to the necessary minimum for each location and should maintain a minimum 1 metre distance.
- All equipment and locations must be cleaned 15–30 minutes before filming. The production department must ensure that adequate time for these procedures is included in the daily schedule.
- All equipment used for the filming must be cleaned regularly. This includes walkie-talkies, megaphones, microphones, boom-poles, wind-shields or equipment which come into frequent contact with skin or saliva. These items should be disinfected with a 70% alcohol solution after each scene. Such equipment should be assigned for the use of a single person, and not be shared. Cleaning workers should wear surgical masks and face shields.
- All equipment used for the filming must be cleaned regularly. This includes cameras, camera rigs, camera attachments, monitors etc. These items should be disinfected with sodium hypochlorite or 70% alcohol solution before and after filming.
- When dealing with outside services that supply crew, those crew members should be dedicated to an individual production, and not be rotated or swapped out with other productions occurring at the same time.
- All equipment arriving on a film set must be sanitized before reaching the location, studio or production environment.
- Avoid dressing the scene with furniture that is difficult to clean such as sofas, chairs, cushions, pillows, tablecloths, etc.
- If there are areas that are off limits, this should be made clear before entering the location.

10

Make-up, Hair, and Wardrobe Departments



- The number of team members should be limited to only those necessary for each scene and location. Wherever possible, the team should not be rotated, swapped and changed.
- Separate make-up, wardrobe and hair areas must be allocated, and each separate workstation should adhere to appropriate social distancing protocols. There must be adequate space and air-flow.
- Avoid unnecessary pre-shoot wardrobe fittings and hair/make-up tests. Where necessary, all present must wear a surgical mask or protective mask and wash hands before engaging with talent.
- Make-up artists and hair stylists should wash their hands with soap and clean water, or use 70% alcohol gel and wear gloves before, during and after every operation.
- Separate make-up products must be used for each artists. All brushes and combs are to be sanitized with appropriate disinfectants between users, and artists should be encouraged to bring their own.
- All equipment should be cleaned before and after filming, including wardrobe hangers and accessories.
- Costumes should be stored and transported individually i.e. each item hung in its own cover. If the wardrobe department needs to store personal clothing belonging to artists, it should be hung separately, and should not be placed in contact with other items of clothing.
- A reserve supply of new make-up products and cleansing products should be kept, to ensure that an emergency does not arise forcing departments to re-use products.
- Artists should wash their face thoroughly before application of make-up.
- Allow adequate prep time and approval time to take cleaning and sanitization protocols into consideration i.e. washing / steaming of clothes prior to and after fittings.

11

Art Department



Art crew are responsible for the sanitization of all furniture, props and surfaces on set, including items constructed, purchased and hired.



All art crew must wear surgical masks or protective masks or PPE in pre-production and on-set.



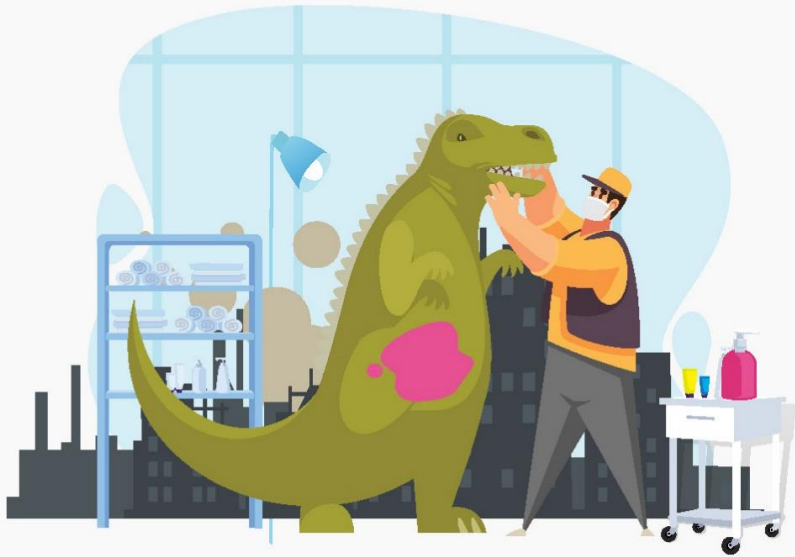
HODs shall supervise the dressing and wrap of locations, handling of props, and ensure that gloves / surgical masks / protective masks and 70% alcohol gel are made available.



The number of crew in art teams should be kept to the minimum necessary for each location.



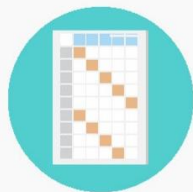
Art department briefing, and pre-production meetings should be done remotely where possible.



Sterilizing and cleaning of purchases must be worked into schedules.



Trucks need to be sterilized. Vehicle hire companies and teams will be educated on how to do this properly.



The wrap of one set should not be conducted at the same time as the dressing of a new set when they are in the same area, to avoid potential cross-contamination. Dressing and wrap should be staggered.



During prep, the art department should ensure the same standards as on the shoot day and sanitize the props and set appropriately.

12

Catering and Craft Services



All catering and craft services personnel must wear appropriate PPE at all times when preparing or handling food. (e.g. gloves, surgical masks / protective masks, and face shields)



Mealtimes will be staggered.



All dining areas should be well-ventilated and provide adequate space and air-flow. Diners should be seated at least 1 metre apart.



In dining areas, adequate markings should indicate the necessary distancing between the seats of at least 1 metre apart.



Any surfaces, tables, and chairs which are used during for mealtimes must be cleansed before and after mealtimes.



All dining areas should be well-ventilated and provide adequate space and air-flow.



There shall be no mealtime buffets. Meals shall be served in individually-packaged single servings. The social distancing protocols must be followed.



Avoid the use of shared water-coolers. Water bottles should be dispensed with minimal person-to-person contact.

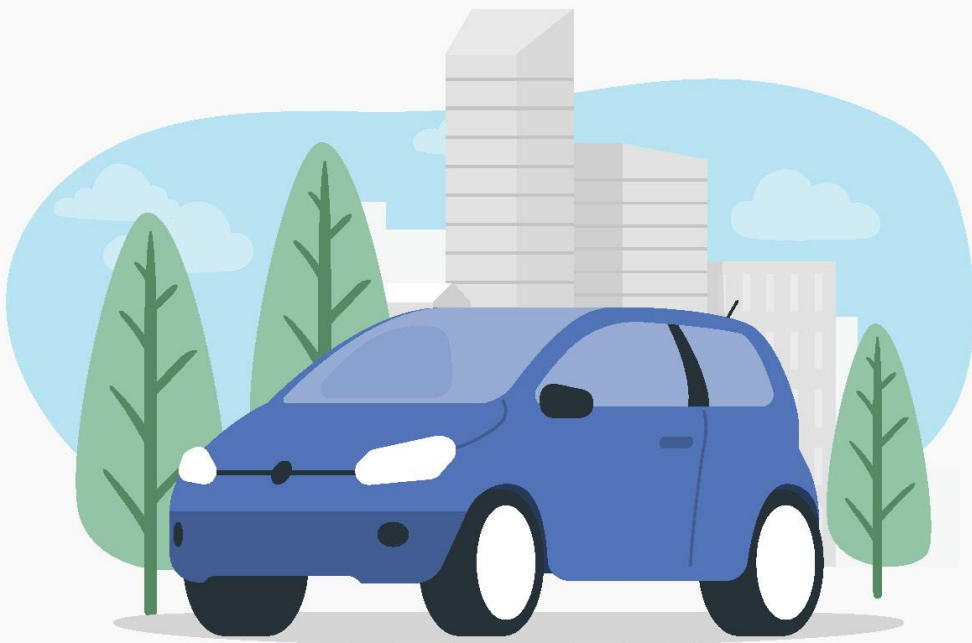


All members of the team, including cast, crew and catering services, must be properly briefed on the preventive measures before they start working.

13

Transportation Measures

- Cast and crew must be transported using sufficient numbers of vehicles to avoid crowding. In vans, no more than two passengers should be seated per row and no more than eight passengers should be seated per a vehicle. Logs should be kept of the passengers and drivers allocated to each vehicle.
- Seats must be thoroughly clean before and after the working day.
- Sterilizing and cleaning must be worked into the schedule. Particular attention should be paid to areas that come into frequent contact with passengers such as seats, seat covers, armrests, interior windows, curtains, cup-holders, and air conditioning controls.
- A responsible person should be appointed by the production coordinator to ensure that protocols are followed.



14

Monitoring Measures



- The Thailand Film Office always assigns a monitoring officer to each production unit to ensure that the scenes filmed conform to the script as approved under the terms of the film permit.
- On every production, it is the responsibility of the local coordinator to monitor all operations and all actions by both Thai and international cast and crew to ensure full compliance with the rules and regulations stipulated in this document.
- In addition to enforcing the measures detailed in this document, the on-set monitoring officer and the local coordinator must comply with all demands and COVID-19 protocols issued by the Ministry of Public Health at all times. They must also report and respond to queries from the Department of Tourism regarding compliance.
- If the Monitoring Officer discovers a violation of any of the safety protocols, s/he must report immediately to the Department of Tourism, who shall inform officers of the Department of Disease Control in accordance with the Communicable Disease Act 2015 and initiate a legal investigation.

Appendix

Alternative State Quarantine (ASQ) and Alternative Local Quarantine (ALQ)

Approved by Ministry of Public Health and Ministry of Defense

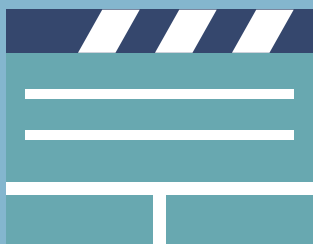
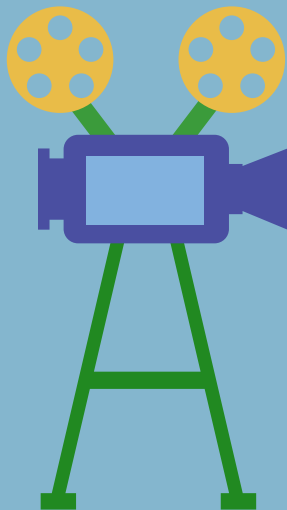
More details: www.hsscovid.com



Hotels in Bangkok and Metropolitan area

Hotels out of town

COVID-19 Useful Links + Helplines



Department of Disease Control,
Ministry of Public Health

www.ddc.moph.go.th/en

www.covid19.ddc.moph.go.th/en

Hotline: 1422

E-mail: ddc.moph@ddc.mail.go.th.

COVID-19 Emergency
Operation Center

www.moicovid.com

www.hsscovid.com

Hotline: 1667 / 1426

Civil Aviation Authority of Thailand

www.caat.or.th/en

Tel. +66 2 568 8800

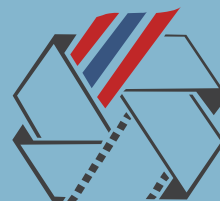
E-mail: info@caat.or.th

Department of Tourism

www.thailandfilmoffice.go.th

Tel. +66 2 141 3333 Ext. 3

E-mail: film@thailandfilmoffice.go.th



THAILAND FILM OFFICE